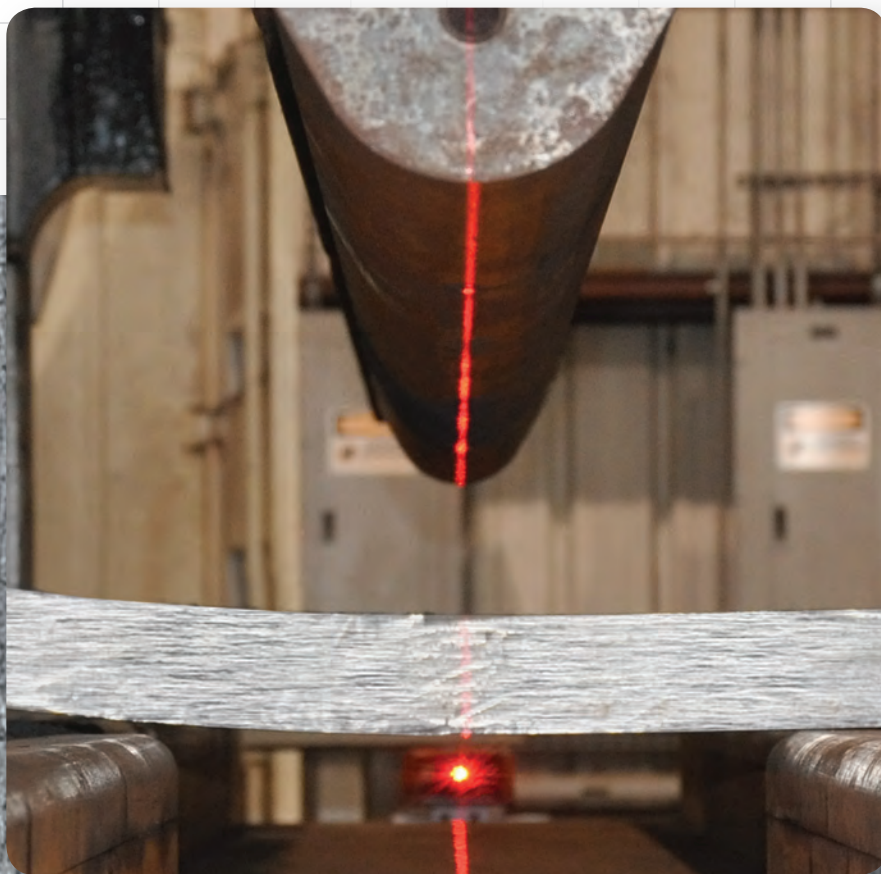


A stylized graphic of a jackrabbit's head in profile, rendered in a dark blue-grey color with a slight 3D effect.

Jackrabbit Steel

Products Inc.



Steel

FORMING EXCELLENCE

Forming, Cutting, Fabricating, Beveling, Machining & Finishing

We form heavy steel for the onshore and offshore energy, manufacturing, mining, and construction industries.

We meet your deadlines.

We have the setup, the system, the equipment, and the team to deliver your product when you want it.

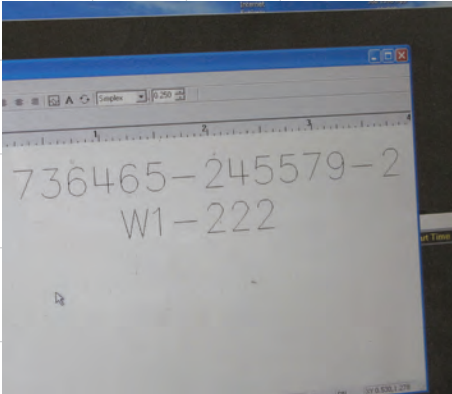
We do your jobs exactly to spec.

Our precision equipment and experienced operators ensure 100% accuracy on every aspect of your job.

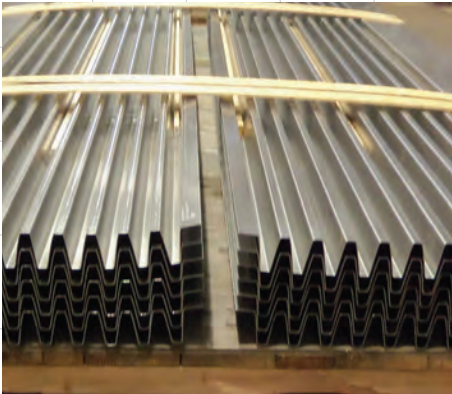
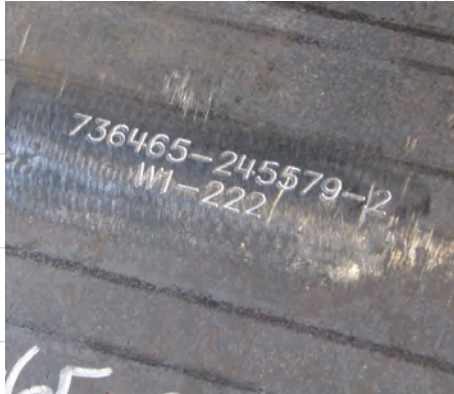
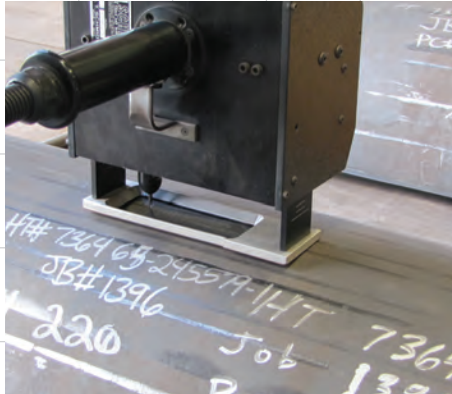
We manage costs.

We estimate with real-world numbers. Count on us to deliver your job on budget.

It's always easier, faster, and less expensive to do it right the first time.



Full and complete traceability of material from the mill plate is paramount. Jackrabbit Steel employs the latest technology to assure every part is clearly and accurately marked.



Miscellaneous parts are produced for the aerospace, defense, oil & gas, and petrochemical industries. No part is too complicated when you employ the right people with the right equipment.



Heavy-wall and high-strength pipe forming is a day-to-day business at Jackrabbit Steel. Pipes up to 26' long can be formed in a single piece. Small diameters down to 8" OD can be formed with a single weld seam.



Eccentric and concentric cones of all sizes and thicknesses can be formed on any of our 4 modern press brakes.

Bend Chart			
SHAPE	DESCRIPTION	AIRFORM	BOTTOMING
>	Vee Die	60	150
└┐	Wiping	—	250
└┐└┐	Offset	150	300/600
└┐└┐└┐	Metal Thickness Offset	300	600
└┐└┐└┐└┐	Channel	225	300
└┐└┐└┐└┐└┐	Vee Rib	200	600
└┐└┐└┐└┐└┐└┐	W Die	300	600
└┐└┐└┐└┐└┐└┐└┐	Open Hat Channel	300	450
└┐└┐└┐└┐└┐└┐└┐└┐	Square Hat Channel	—	600
└┐└┐└┐└┐└┐└┐└┐└┐└┐	Preform Curl	—	300
└┐└┐└┐└┐└┐└┐└┐└┐└┐└┐	Preform Curl	—	200
└┐└┐└┐└┐└┐└┐└┐└┐└┐└┐└┐	Close Curl	—	300
(6 7 8 9)	Radius	—	180/300



From the biggest, most complex project to the smallest, simplest job ... **we've got you covered.**

Muscle & Finesse

6-inch plate formed to your exacting specifications



Pacific Technologies FK2500 26 Press Brake

Capacities

- 2500-ton capacity
- Bending capacity 1/4" - 6" steel plate
- Forms 2" steel plate to 24' in length and 3" plate up to 10'. Maximum steel plate thickness is 6"

Features

- 26' long bed length
- Ultra heavy duty, solid steel frame for uniform bends along full length of parts
- Fully programmable CNC controls for accurate multi-bend parts
- Computer controls provide repeatable accuracy to two thousandths of one inch in 26'
- Through hardened and polished adjustable channel dies for accurate and consistent bends
- Clear pass-through width of 22' for long and wide parts
- High visibility lasers at both ends of the bed to ensure precise alignment of parts

Capabilities

- Heavy wall cylinders from 10" diameter up to 38" diameter
- Single seam cylinders 1 3/4" thick up to 26' long
- 3/4" thick cylinders down to 24" diameter
- 1 1/2" thick 90 degree angle shapes 20" by 20" by 26' long
- Long cones and transition shapes up to 3" thick
- Onboard computer graphics to create custom parts at the machine
- Onboard storage for multiple bend parts and repeat orders of the same part
- Crane serviced by (3) 20-ton overhead cranes



Pacific K1250-23 Press Brake

Capacities

- 1400-ton capacity hydraulic press brake
- Bending capacity 1/4" - 2 1/2" steel plate
- Form 2" steel plate to 10' in length
- Form 1" steel plate to 22' in length
- Maximum steel plate thickness is 4"



Features

- 23' long bed length
- 30" stroke length
- Fully programmable CNC controls for accurate multi-bend parts
- Hardened and polished adjustable channel dies to accommodate any shape
- Clear pass-through width of 20' to handle long and wide parts
- High visibility lasers at both ends of the bed to ensure precise alignment of parts



Ursviken EKP-CNC 440 15/12 Press Brake

Capacities

- 440-ton capacity hydraulic press brake
- Bending capacity 1/16" - 1" steel plate
- Form 1/2" plate shapes to 15' in length
- Form 3/4" plate shapes to 6' in length
- Maximum steel plate thickness is 1"

Features

- Smooth positive hydraulic power
- Full CNC computer controls for accurate forming of parts
- CNC controls ensure consistency for every part
- Fully integrated computer controlled pusher/back gauge for accurate multi-bend parts
- Full complement of custom dies to form small closed "C" shaped parts
- Automatic die cambering to ensure consistent shapes regardless of length or thickness



- Clear pass-through width of 12' to accommodate wide & long steel blanks
- High visibility lasers at both ends of the bed to ensure precise alignment of parts



Pacific K300 Press Brake

Capacities

- 300-ton capacity
- Bending capacity 1/16" - 5/8" steel plate
- Form 1/2" plate shapes to 12' in length
- Form 5/8" plate shapes to 6' in length
- Maximum thickness is 3/4" steel plate

Features

- Smooth precise hydraulic power
- Time tested hydraulic controls for accurate and consistent formed shapes
- Clear pass through width of 9' for wide or long parts
- Automatic die cambering to ensure consistent shapes regardless of length or thickness
- Full complement of "VEE" dies for any parts, small or large
- High visibility lasers at both ends of the bed to ensure precise alignment of parts



Jackrabbit Cranes & Forklifts

provide the lifting and moving ability to manhandle any load.



Six 20-ton Overhead Cranes move the steel from one station to the next.



7 High-Capacity Forklifts shuttle raw materials and finished product quickly and efficiently.

100% Quality Assurance

Our Quality Assurance program ensures that what we supply is inspected for top quality, precision formed and ready to stand up to your rigorous standards. We maintain 100% traceability of all material by identifying every product from the origin of steel stock through all stages of production.



FORMING • CUTTING • FABRICATING • BEVELING • MACHINING • FINISHING



Precision craftsmanship



Start with the best craftsmen in the business.

Give them the resources and the equipment they need.

Build them into a dedicated team that works together seamlessly to get the job done.

They will give you the most for your money on every job.

The bottom line.

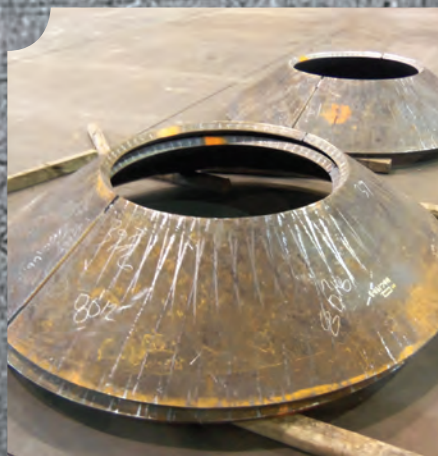
When you are tired of excuses about budget overruns, missed deadlines, and quality issues it's time to take a look at Jackrabbit.



**Contact us today for more information
and for a bid on your next project.**

Jackrabbit Steel Products, Inc.
9009 Jackrabbit Road
Houston, TX 77095
281-550-4551
281-550-4557 (fax)

JackrabbitSteel.com
Info@JackrabbitSteel.com




Jackrabbit Steel
Products Inc.



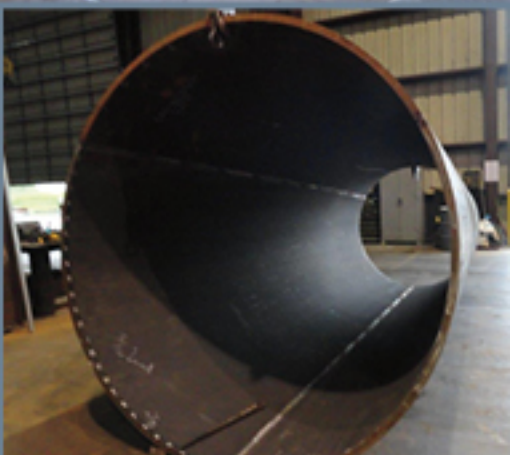
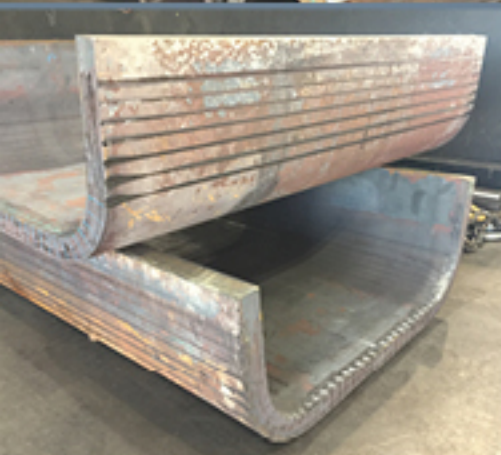
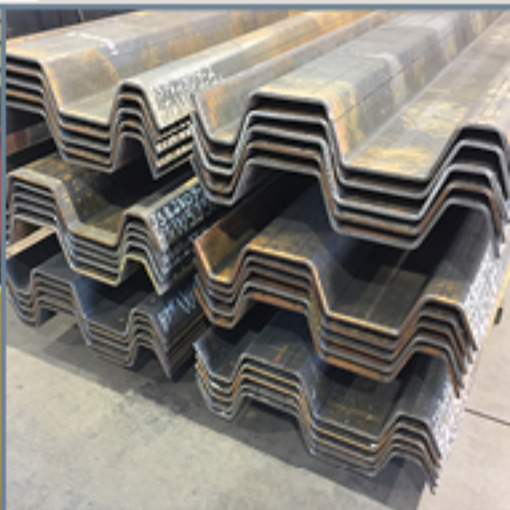
CYLINDERS | CYLINDER SEGMENTS | CRANE PEDESTALS
SUCTION PILES | CAISSONS | RINGS | CANS

Jackrabbit Steel Products has the capability to roll mild steel up to 4.25" thickness and up to 10' in length for Cylinders, Cylinder Segments, Rings, Cans etc.

The skills and competencies of Jackrabbit's experienced operators assure that our Customer products are delivered to the required specification, on time and within the agreed budget.

Contact us today at 281.550.4551
or
info@jackrabbitsteel.com for an estimate!

Jackrabbit Steel Products



Jackrabbit Steel Products specializes in the art of forming and rolling, high tensile plate. Current capabilities cover a wide range of thicknesses, diameters and lengths giving our customers the support they require for all bending needs.

We continue to exceed customer expectations demanding quality, safety and on-time deliveries, while maintaining a competitive price structure.

Contact us today at 281.550.4551
or
info@jackrabbitsteel.com for an estimate!